

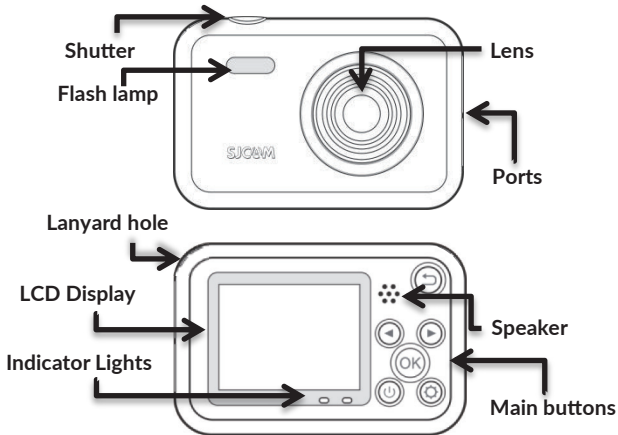
# SJCAM

EMPOWER YOUR DREAMS



## FUNCAM

# Parts of the camera



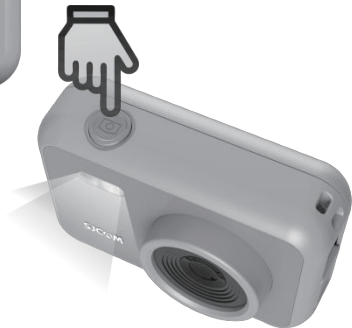
# How to use FunCam



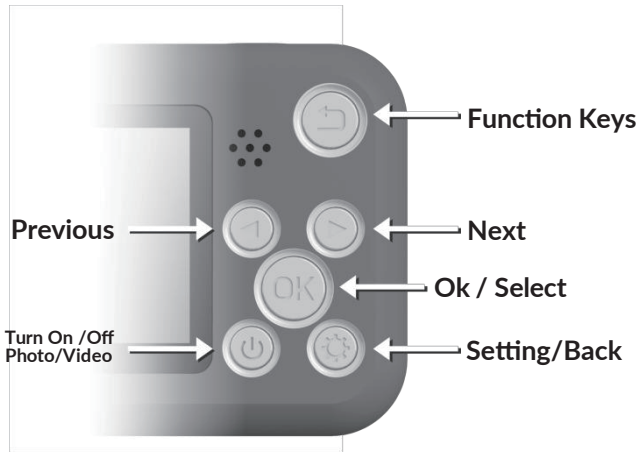
3 seconds

**Turn Camera On**

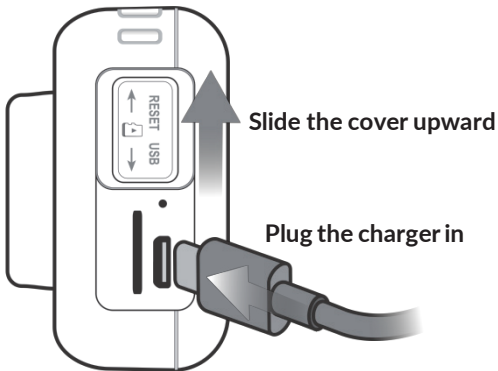
**Click to take  
pictures and videos**



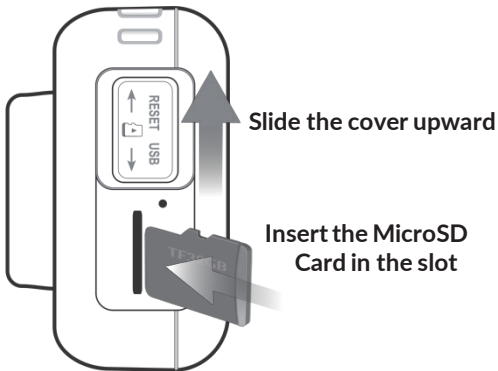
# The buttons at the back



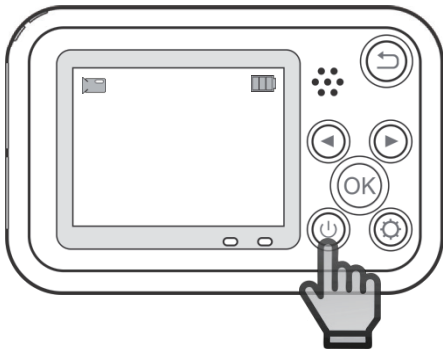
# How to charge FunCam




# How to insert Memory Card

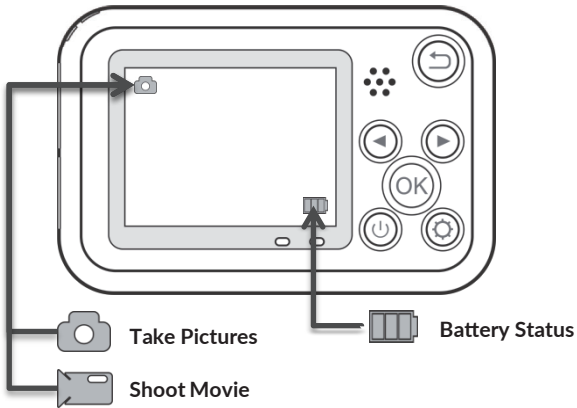


# Switch to Video or Photo



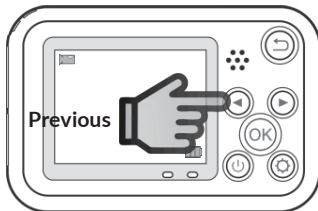
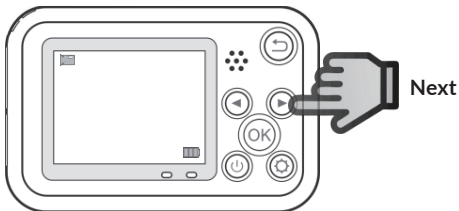
While camera is on,  
Short-press  to switch camera from Photo to Video mode.  
Or Video to Photo mode.

# Icons on the screen

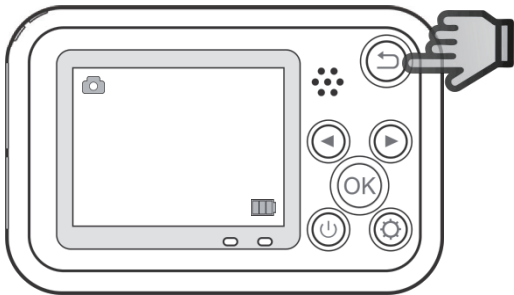




# Moving around the selections

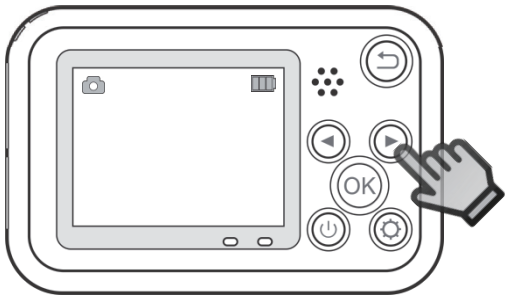


# Return to previous screen



Press to enter the function interface,  
you can choose photo mode, video mode, media library,  
small games, settings and other functions

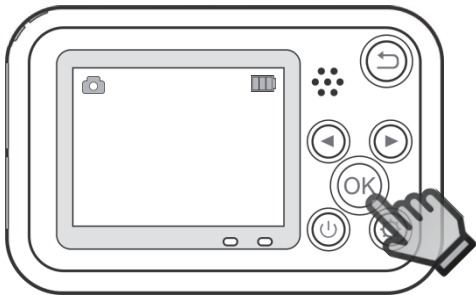
# How to change backgrounds



In photo mode, you can choose 24 different photo stickers by using the Previous and Next buttons

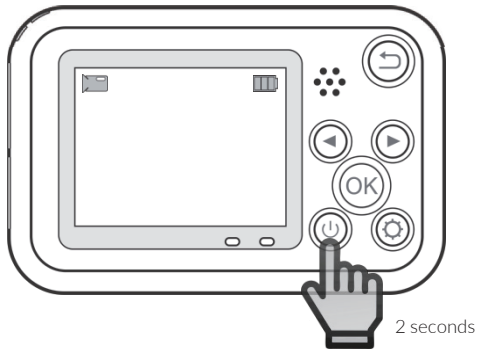
(Photo Mode only) ◀ ▶

# How to change screen colors



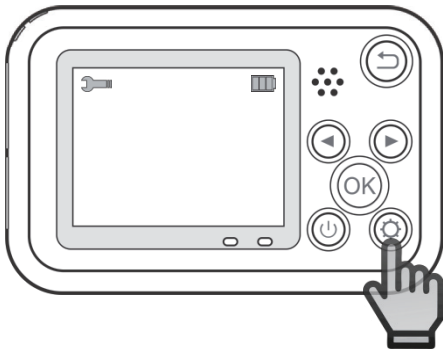
Choose from 4 image colors by pressing .

# How to turn the camera off



**Press POWER BUTTON for 2 seconds to  
Turn off camera.**

# How to change settings





**Press the setting key (wheel icon) to enter the setting interface / Click this button in the setting interface to withdraw action**

## **This page is for grownups**

1. Children must always be accompanied by a grownup to always keep them safe while operating the camera.
2. This camera is not suitable for underwater use, do not submerge.
3. Do not leave the camera in hot environments or under direct sunlight for long periods.
4. Avoid charging for long durations. Keep it away from children and pets while charging to avoid accidents.
5. Store the camera in a cool, dry, and dust-free place when not in use.

## Power Button

- Turn the camera ON by pressing the Power Button for 2 seconds.
- Camera will start in Photo mode. 
- Press the Power Button again to switch to Video mode. 
- To turn camera OFF, press the Power Button again for 2 seconds.

## Previous and Next Buttons

- In photo mode, you can choose 24 different photo stickers by using the Previous and Next buttons .

## OK Button

- Press OK button to select 4 different screen backgrounds color.

## Function button

- Press the function button to enter the function interface.



# Photo Options in Menu

USE    TO NAVIGATE. THEN  TO SET.

**Photo resolution:** 12M 4032X3024 / 10M 3840X2880 /  
8M 3456X2448 / 5M 2928X2256 /  
3M 2400X1792 / 2M 1920X1440 / 1M 960X720

**Capture mode:** Single shot, 2S Delay, 5S Delay, 10S Delay.

**Continuous shooting:** On / Off .

**Date/Time:** set up date, time.

**Language setting:** Simplified Chinese, Traditional Chinese,  
Japanese, English, French, German, Polish,  
Spanish, Russian, Roman, Czech .

**Auto Power Off:** Off, 3 Mintues, 5 Mintues, 10 Mintues.

**Format:** Cancel / ok .

**Default Setting:** Cancel / ok .

**Version:** Display current version information.

## Video Options in Menu

USE    TO NAVIGATE. THEN  TO SET.

**Video resolution:** 1080P ; 720P .

**Cyclic resord:** Off, 3 Minutes, 5 Minutes, 10 Minutes .

**Time-lapse photography:** Off, Low, Medium, High .

**Date/Time:** set up date, time .

**Language setting:** Simplified Chinese, Traditional Chinese,  
Japanese, English, French, German, Polish,  
Spanish, Russian, Roman, Czech .

**Auto Power Off:** Off, 3 Mintues, 5 Mintues, 10 Mintues.

**Format:** Cancel / ok .

**Default Setting:** Cancel / ok .

**Version:** Display current version information.



